

VOR

Katrina West

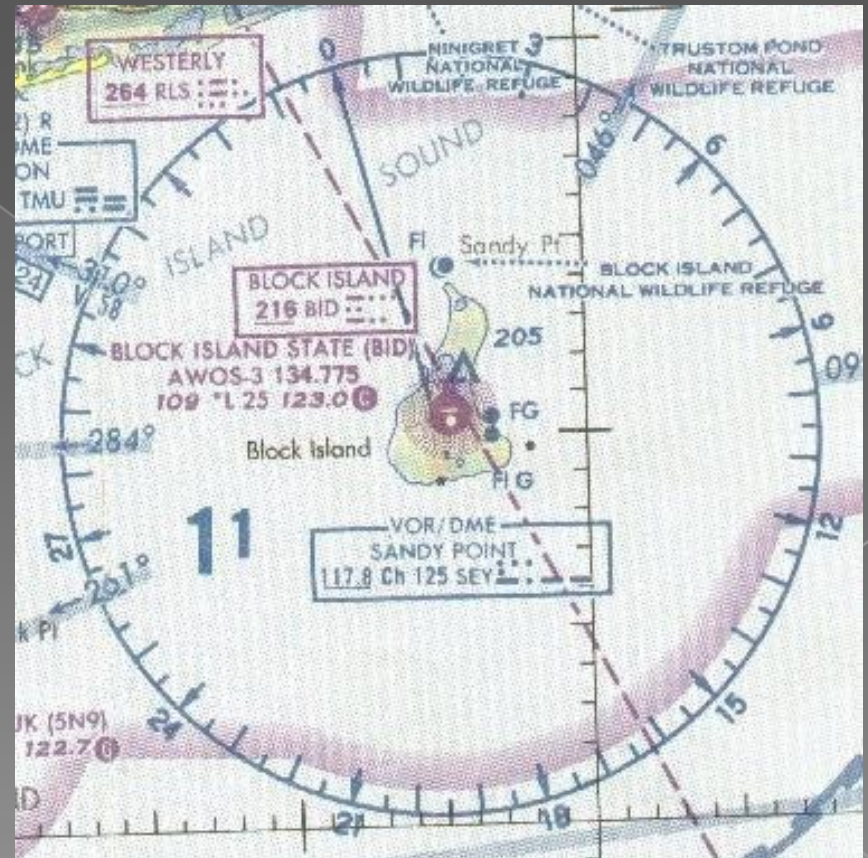


Overview

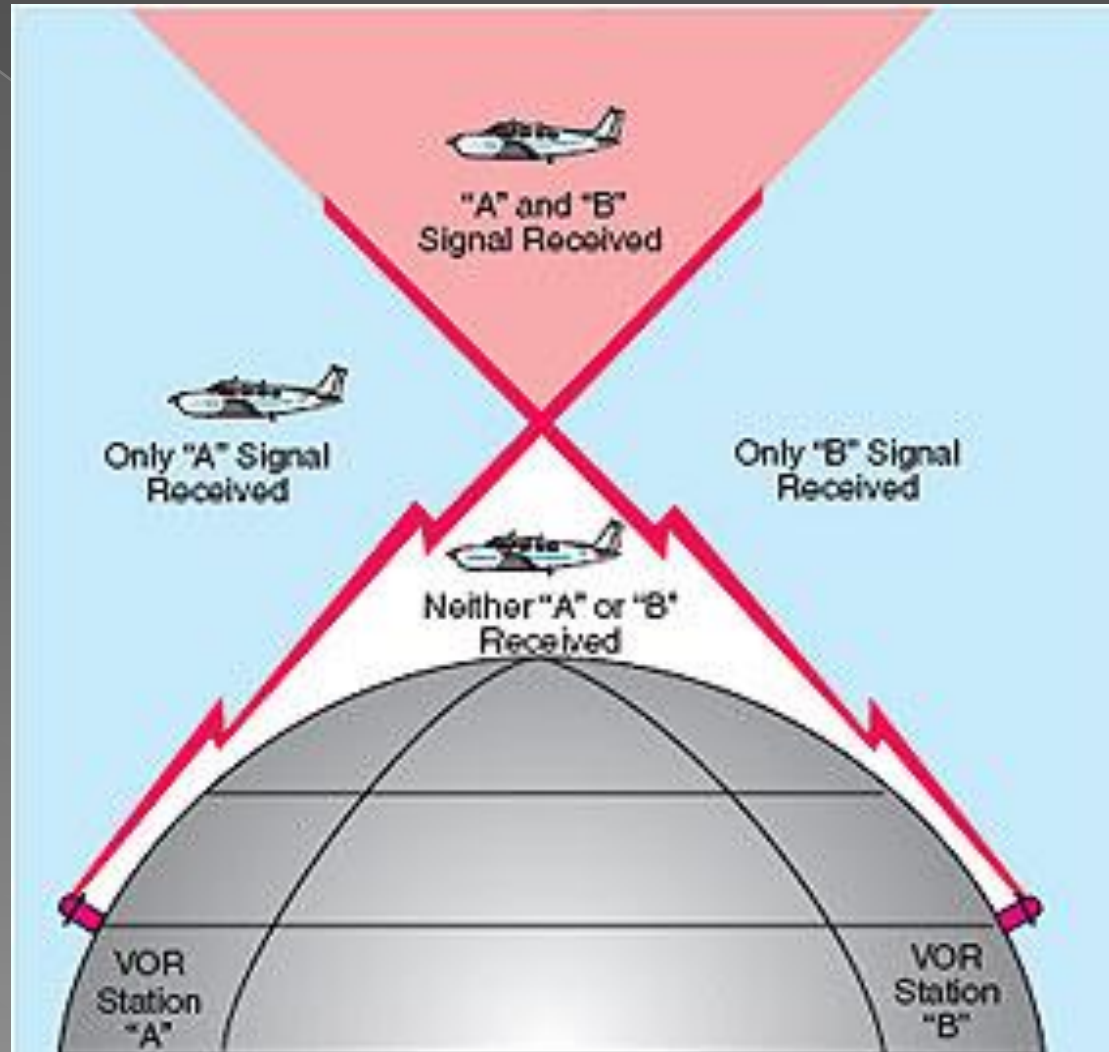
- ◉ How VOR Works
- ◉ VOR Transmissions
- ◉ VOR Ranges
- ◉ VOR Indicator
- ◉ TO/FROM /Off Course Indications

How VOR Works

- The VOR Station transmits two signals at the same time.



VOR Transmissions



VOR Ranges

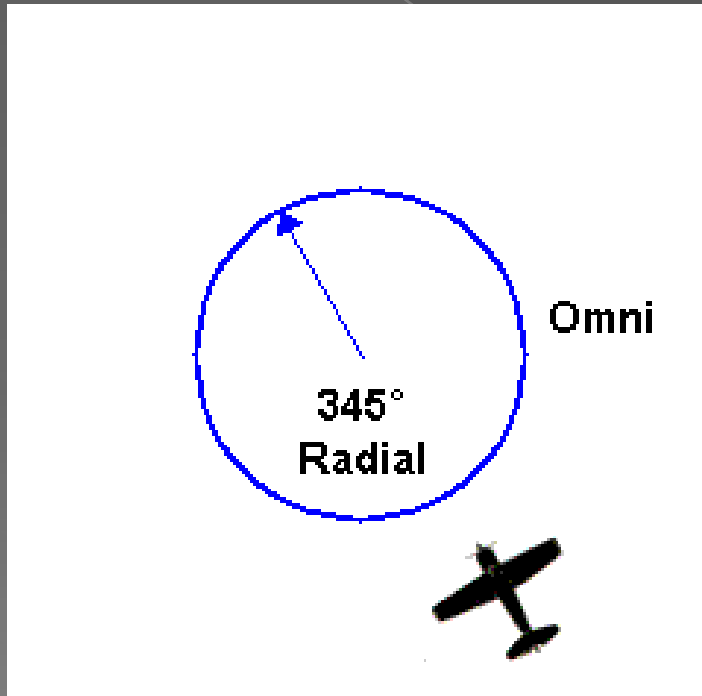
VOR Class	Range NM	Within Altitude (feet)
● Terminal (T)	25	1000 – 12,000
● Low Altitude (L)	40	1000 – 18,000
● High Altitude (H)	40	1000 – 14,500
	100	14,500 – 60,000
	130	18,000 – 45,000

How VOR Indicator Works

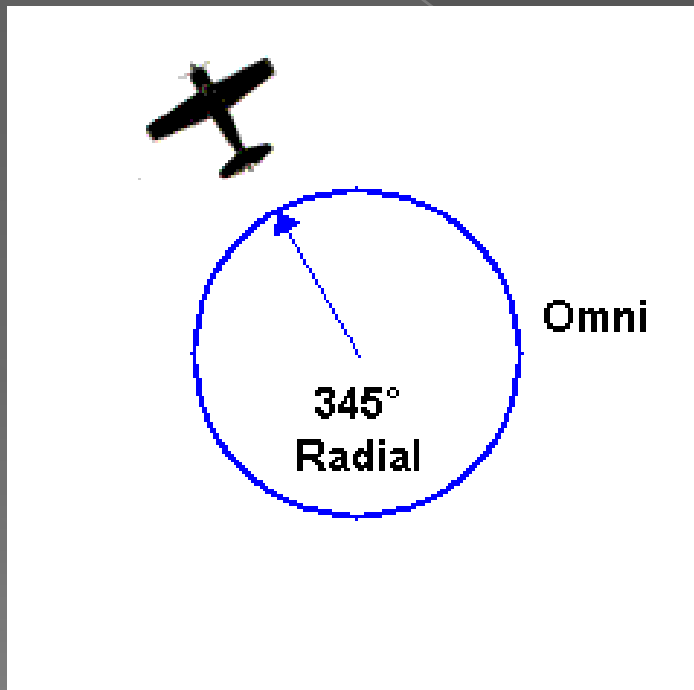
- A. Rotating Course Card
- B. Omni-directional Bearing Set - OBS
- C. Course Deviation Indicator - CDI
- D. TO/FROM Indicator



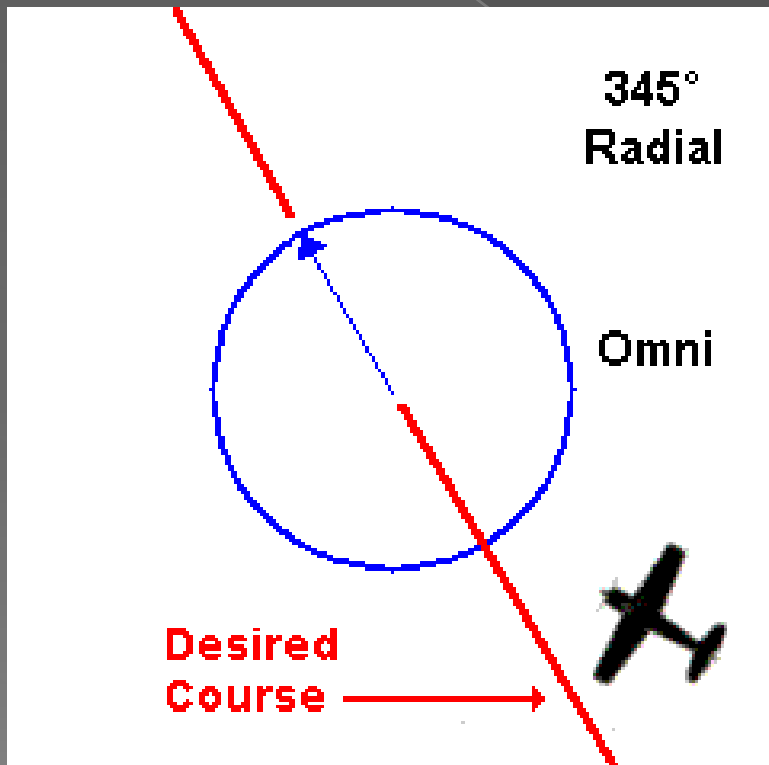
TO Indication



FROM Indication



VOR Off Course



Summary

- ◉ How VOR Works
- ◉ VOR Transmissions
- ◉ VOR Ranges
- ◉ VOR Indicator
- ◉ TO/FROM /Off Course Indications

References

- <http://www.flightsim.com/howto/vorxmit.jpg>; Copyright © 1998 by FlightSim.Com
- <http://www.flightlearnings.com/wp-content/uploads/2008/10/vhftransmissions.jpg>
- <http://www.navfltsm.addr.com/vor-nav.htm>; © 1999 – 2008, Charles Wood.