

Name: \_\_\_\_\_

Date: \_\_\_\_\_

## Miniature Earth

www.miniature-earth.com



### *New Vocabulary*

Directions: Write the definition next to the word(s).

**community** \_\_\_\_\_

**proportions** \_\_\_\_\_

**disabled** \_\_\_\_\_

**malnourished** \_\_\_\_\_

**sanitation** \_\_\_\_\_

**urban area** \_\_\_\_\_

**entire** \_\_\_\_\_

**wealth** \_\_\_\_\_

**development aid** \_\_\_\_\_

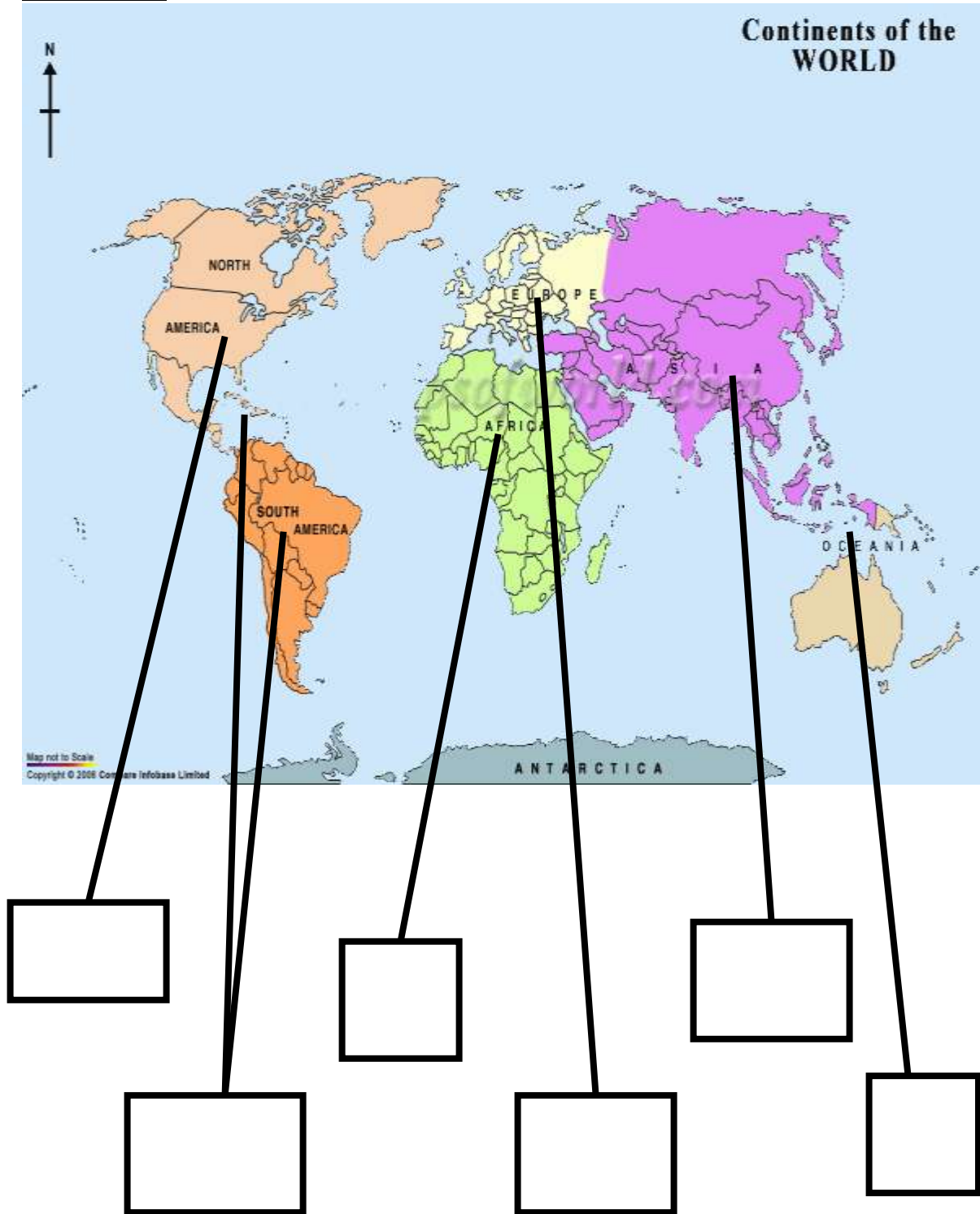
**military expenditures** \_\_\_\_\_

**struggle** \_\_\_\_\_

**appreciate** \_\_\_\_\_

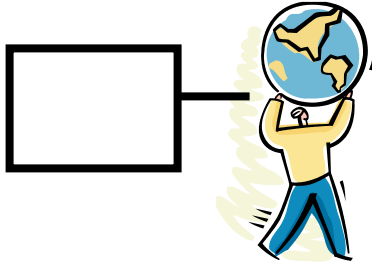
# Ethnic numbers in the miniature earth

Directions: Fill in the boxes with the correct numbers or words.

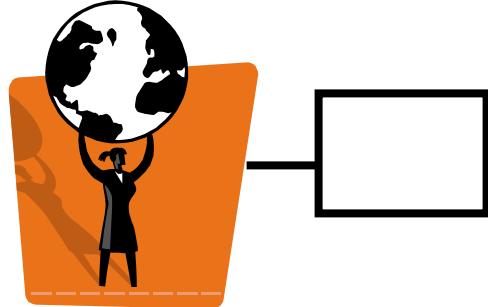


## Number of men and women

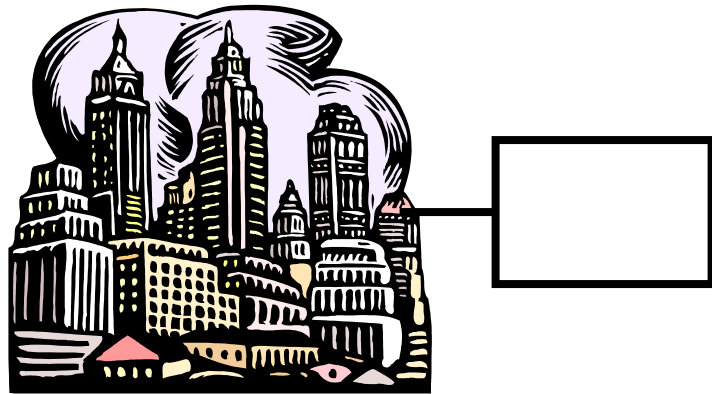
*Men*



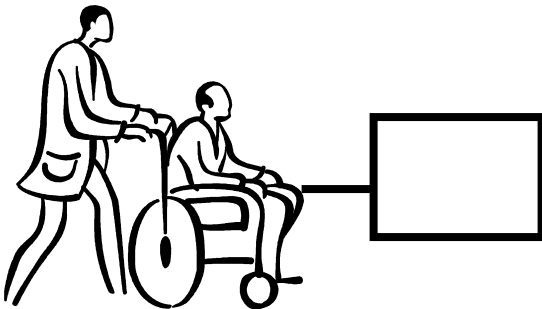
*Women*



## Number of people living in an urban area

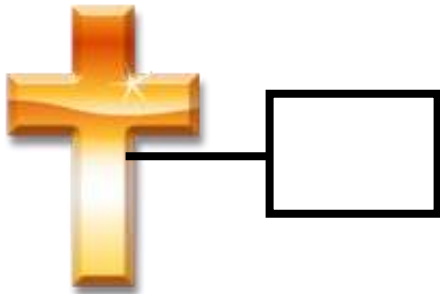


## Number of disabled people

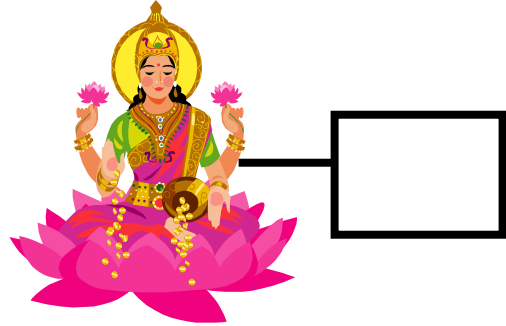


# Numbers and religions

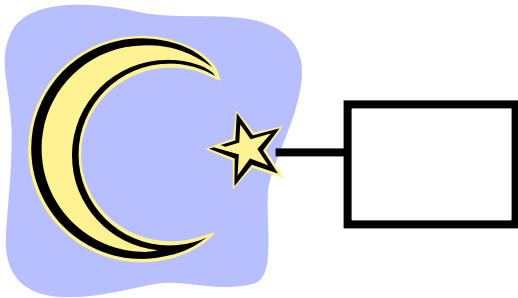
*Christian*



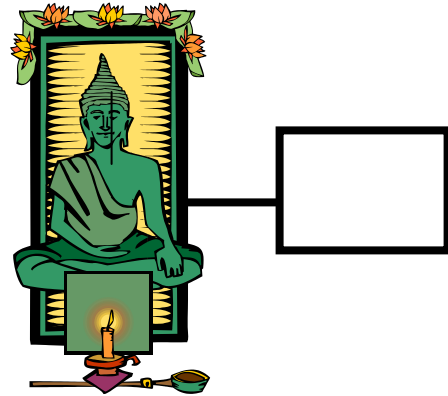
*Hindu*



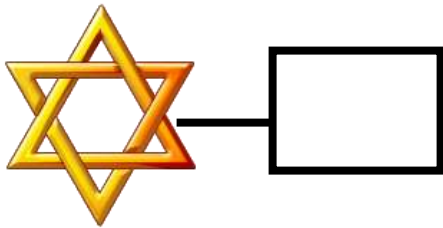
*Muslim*



*Buddhist*



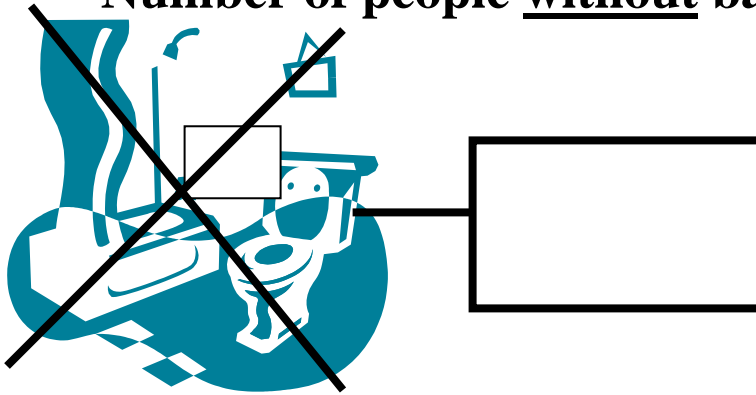
*Other religions*



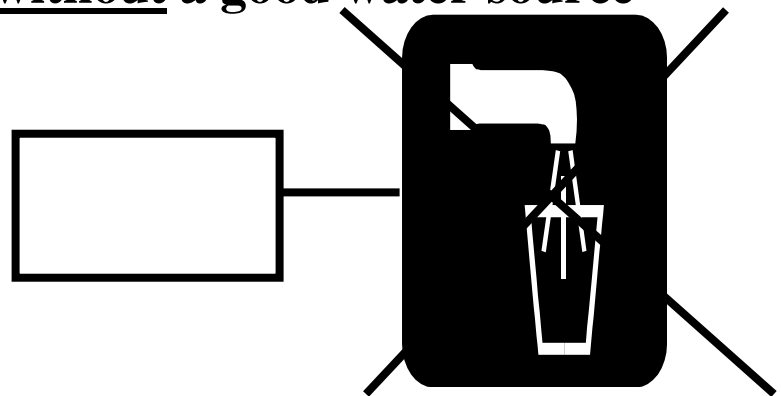
*Non-religious*



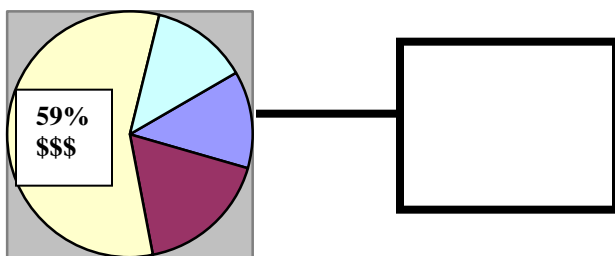
**Number of people without basic sanitation**



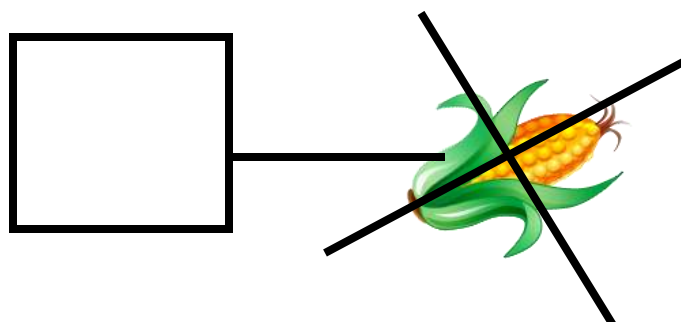
**Number of people without a good water source**



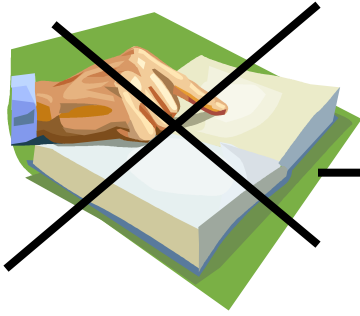
**Number of people who own 59% of the wealth**



**Number of hungry or malnourished people**



**Number of people who can't read**



**Number of people with a secondary education**

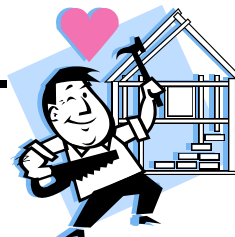
**Number of people with a computer and internet connection**



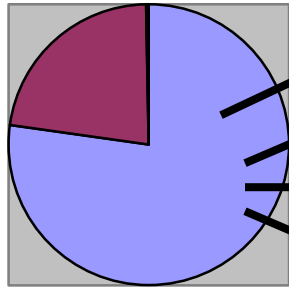
**Number of people with HIV/AIDS**



**The amount of money spent on military expenditures and development aid**



You are richer than  of the miniature earth if you:



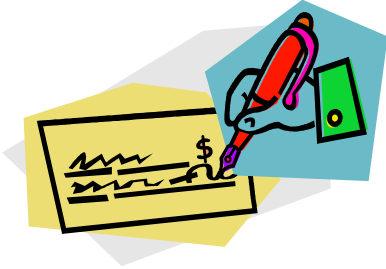
Put your food in a refrigerator

Put your clothes in a closet

Have a bed to sleep in

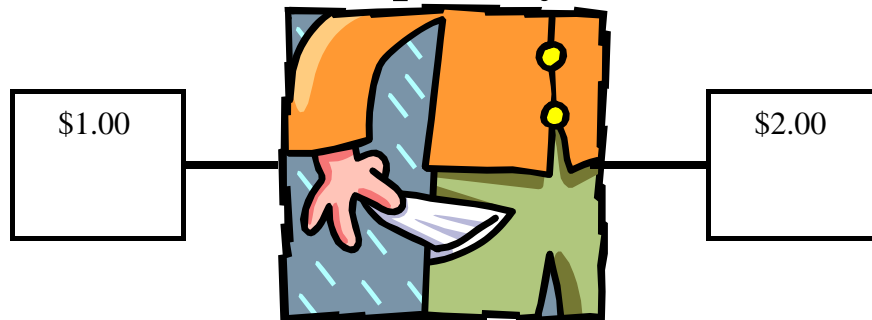
Have a roof over your head

You are 1 of the 30 wealthiest people in the miniature earth if you have a:



$$= \frac{1}{30} = \$\$\$$$

Number of people who struggle to live on \$1.00 and \$2.00 per day or less



**APPRECIATE WHAT YOU HAVE AND DO YOUR BEST FOR A BETTER WORLD!**