

SkillsTutor™

Teacher Quick Start Guide

User Name:

Password:

Site ID:

Beginning With SkillsTutor

1. Go to www.myskillstutor.com
2. Enter your User Name, Password and Site ID

Using Teacher Functions

Functions Include:

1. Tool Bar Buttons
2. Classes (discuss separately)
3. Reports (discuss separately)
4. Standards



Setting Up A SkillsTutor Class

Create A Class:

1. From the Main SkillsTutor screen, click **Classes**
2. Click **Create New**
3. Type a class name in the blank space
ⓘ *Do not use special characters!*
4. Click **Save** to return to the Classes screen



Adding Students To A Class:

5. Click on the name of the class
6. Click **Students**
(Students already enrolled in the class are listed)
7. Click **Enroll Students**
8. Check the name of each student to enroll in this class. *Tip: Use blank boxes to search for students*
9. Click **Done Enrolling Students**

Adding New Students

Note: Be sure to use the same username and password format established by your school site

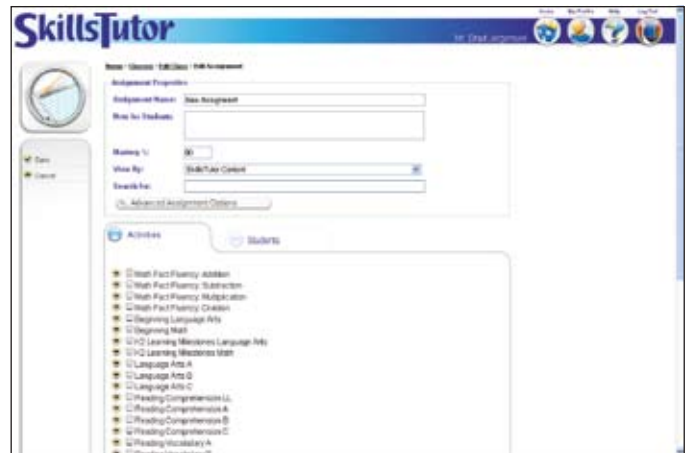
1. Click **Enrollment**
2. Click **Add New Student**
3. Enter the required fields
5. Click **Done** (Student will automatically have a check by his/her name)

Removing Students From A Class

1. Click **Students**
2. Click **Enrollment**
3. Remove the checkmark beside the student to be unenrolled
4. Click **Enroll Selected Students**
5. Click **Done**

Creating An Assignment In SkillsTutor

1. Click in the class name
2. Click **Create New**
3. Select how to View the Activities
 - A. SkillsTutor content
 - B. State standards
 - C. Search box
4. Check the box next to the lessons to assign
5. Enter an assignment name
6. Enter a Note for Students (Optional) **! Keep it simple!**
7. Click **Advanced Assignment Options**
8. Click **Students**. Click on the assignment name to assign to all students or you can differentiate instruction by checking the box next to a student's name
9. Click **Save**



Running Reports For SkillsTutor

1. Click on **Reports**
! Pop-Up Blockers must be turned off!
 - A. Data Analysis Tab
(For observation only – not for printing):
 - Product Data
 - Student Data
 - B. Class Reports Tab:
 - Assignment Library
 - Class Usage
 - Class Activity
 - Class Profile
 - Student Profile
 - Class Averages
 - Student Detail
 - Standards Usage
 - Parent Letter
 - Calendar
 - C. Assignment Reports Tab:
 - Mastery Profile
 - Assignment Averages
 - Student Detail
 - Gradebook
 - D. For Math Fact Fluency Only:
 - Fact Assessments
 - Fact Matrix

