

Washington Certification Services at Green River Community College administers the Backflow Assembly Tester (BAT) professional growth examination following regulations, policies and procedures established by Washington State Department of Health (DOH) in cooperation with the Waterworks Operator Certification Advisory Committee.

BATs certified before January 1, 2007 are required by Waterworks Operator Certification regulation WAC-246-292-090(4) to pass the Department's professional growth examination by December 31, 2009 to be eligible for certification renewal. BATs certified after January 1, 2007 must pass the examination by December 31, 2012.

The BAT professional growth examination is a practical (hands-on) examination.

To pass the examination, applicants will have one hour to:

- Demonstrate competency in testing the following four backflow prevention assemblies to standard performance criteria:

1

- Pressure Vacuum Breaker Assembly (PVBA)

2

- Spill-Resistant Pressure Vacuum Breaker Assembly (SVBA)

3

- Double Check Valve Assembly (DCVA)

4

- Reduced Pressure Backflow Assembly (RPBA)

- Correctly identify and diagnose one simulated failure condition for the RPBA, DCVA, and PVBA. There will not be a simulated failure condition for the SVBA.

Applicants will also be required to fill out a test report of all four backflow prevention assemblies. The test report forms must be complete, accurate, and legible. The forms may be completed after the one-hour time limit for the practical examination.

Test Procedures

Applicants will be examined using only the test procedures approved for use in Washington State as published in the July 1998 edition of *Backflow Prevention Assemblies Field Test Procedures for Use in Washington State*. These test procedures are based on the 9th Edition of the *Manual of Cross Connection Control* published by the University of Southern California Foundation for Cross Connection Control and Hydraulic Research.

The following reference materials will be available at the examination site:

- *Backflow Prevention Assemblies Field Test Procedures for Use in Washington State*
- Abbreviated Backflow Assembly Test Procedures approved by Department of Health for each of the four backflow prevention assemblies

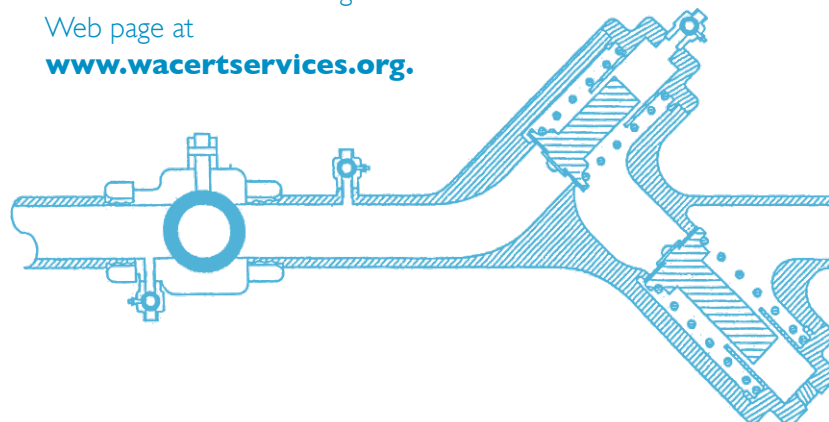
Test Kits

A five valve differential pressure test kit will be available for applicant use at the examination site. Applicants may use their own differential pressure test kit if they provide the examination proctor with a current certificate of accuracy or calibration report.

Examination Schedule

BAT professional growth examinations are normally scheduled on the third Friday of each month, except holidays. Additional examination dates may be added based on demand. The most current examination schedule is available on the Washington Certification Services Web page at

www.wacertservices.org.





BAT EXAMINATION APPLICATION PROCESS

Please review carefully.

Who is eligible to apply for the BAT Professional Growth Examination?

You are eligible to apply if:

- you are certified as a BAT in Washington
- you have not taken a professional growth examination in the current reporting period
- you have already taken a professional growth examination in the current reporting period and have received official results confirming that you did not pass this examination

No education, experience or training is required as a prerequisite for taking this examination.

How do I apply for a Professional Growth Examination?

- If you are eligible, complete the most current Application for Washington State Backflow Assembly Tester Professional Growth Examination.
- Mail it with the \$145.00 fee payable to GRCC/BAT.
- **Applications must be received by Washington Certification Services at least ten business days before the examination date. Space is limited and applications are accepted on a first-received basis. As a result, examinations may be full prior to the application deadline date.**

What forms of payment are accepted?

Only checks or money orders made payable to GRCC/BAT will be accepted as payment of the fee. Cash, purchase orders or credit card payments are not accepted for BAT examinations.

Is the fee refundable?

Fees for eligible applicants are non-refundable and may not be transferred to a different applicant. The fee will be returned only if the applicant is not eligible for the BAT professional growth examination or the examination is cancelled.

Can an applicant transfer to a different examination?

An applicant may request one voluntary transfer to a different examination date or location at no cost if Washington Certification Services receives the request before the application deadline date. After one voluntary transfer, an applicant must submit a new application and pay the examination fee.

Do applicants receive a confirmation letter?

Approved applicants will receive a letter prior to the examination confirming their enrollment and providing information about the examination location, time, procedures and study references.

Examination Results

The confidential examination results will be mailed to you within three (3) weeks of the examination date. Washington Certification Services cannot respond to applicant questions about results of the examination until it has been graded and you have received the official notification.

More Information or Questions?

Visit the Washington Certification Services web page at
www.wacertservices.org

Or call toll-free in Washington
877-780-2444